



Looking for durable Builder's Floor Sheets?

ABC TARPS will get you covered.

ABC TARPS has supported the Australian Building and Construction industry for over 30 years with trusted, high-performance tarpaulin solutions. Our **DURATARP™ 5000** Extra Heavy Duty Builder's Floor Sheets are designed to be tough, lightweight and easy to use on site.



Extra Heavy Duty 290GSM



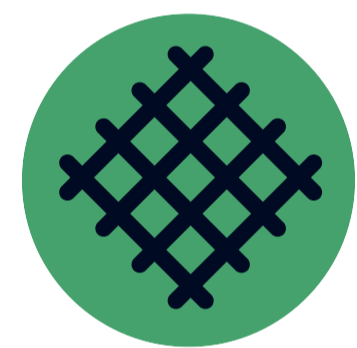
Increased Scuff Resistance



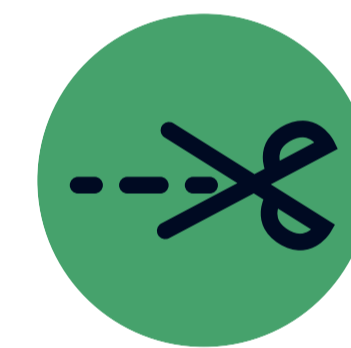
Waterproof & UV Stabilised



Extensive Size Range



High Density Weave Count



Straight Cut No hems or eyelets

Our covers provide economical and effective solutions for a variety of industries.

Explore the full range and sizes below or visit our website

www.abctarps.com.au/tarpaulins/builders-tarp-floor-sheets/

BFS Sizes:

| | | |
|---------------|---------------|---------------|
| 7.0m x 11.0m | 10.0m x 14.0m | 15.0m x 15.0m |
| 7.5m x 15.0m | 12.0m x 12.0m | 15.0m x 18.0m |
| 9.0m x 12.0m | 12.0m x 15.0m | 15.0m x 20.0m |
| 9.0m x 15.0m | 12.0m x 18.0m | 15.0m x 25.0m |
| 9.0m x 18.0m | 12.0m x 21.0m | |
| 10.0m x 12.0m | 20.0m x 20.0m | |

Tarps can be Made to Order - Price on Application

Not sure where to begin?

On the next page follow our step by step guide to ensure your Builder's Floor Sheet is set up for maximum coverage and performance.

Let's get started →

(All our products are manufactured under a quality assured ISO 9001-2008 manufacturing process.)

Any tarp related questions? Feel free to contact us on:

1300 656 211 (All Hours)

info@abctarps.com.au

www.abctarps.com.au

abctarps

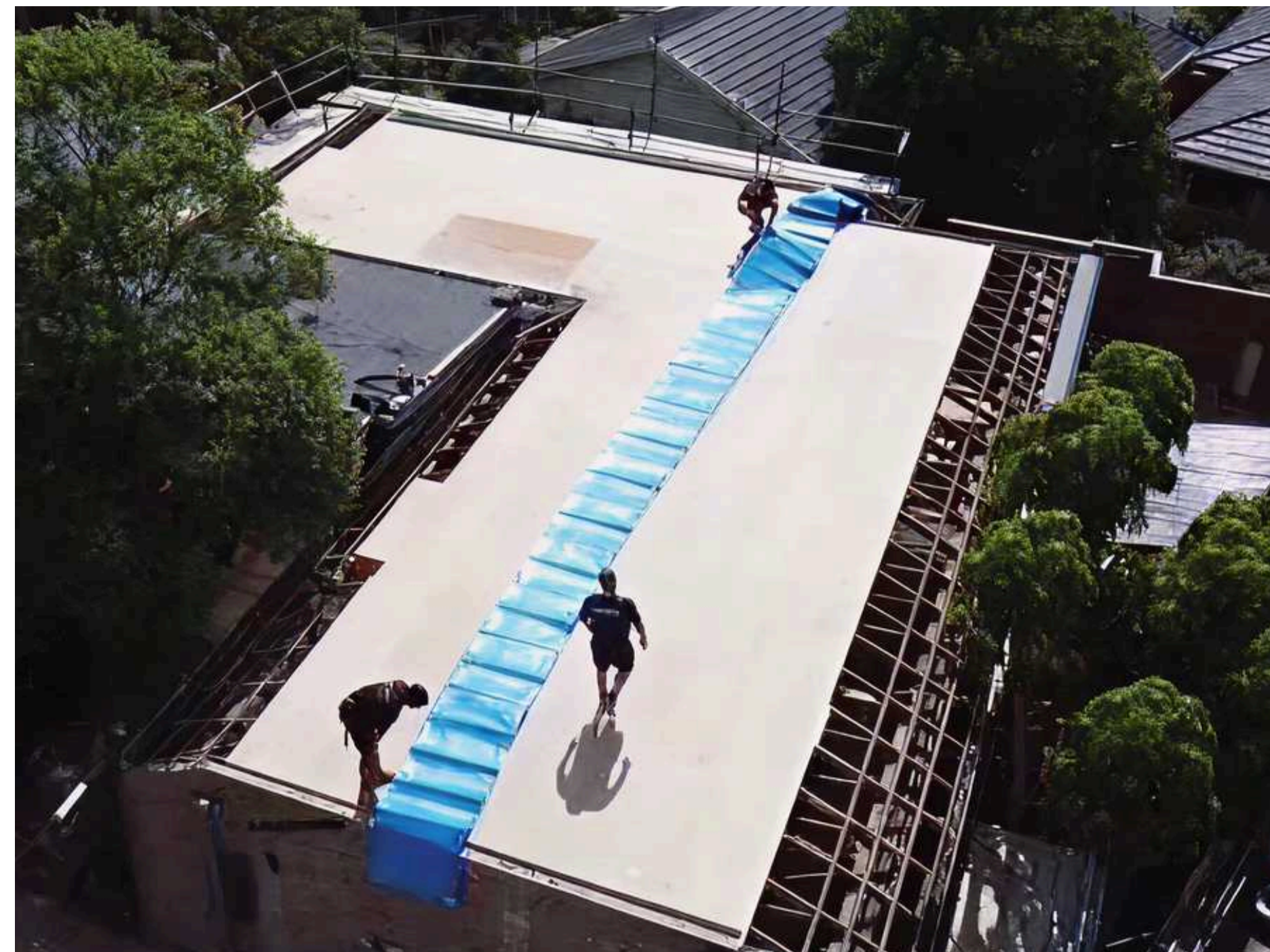
Time to lay your Builders Floor Sheet?

Follow these quick steps from **ABC TARPS**



1. Base Layer

Lay down Yellow Tongue panels as the flooring base.



2. Unfurl

Unroll the BFS with the long side going out first.



3. Align

Align the sheet with at least 1 metre overhang on all sides.



4. Mark

Use a waterproof marker to outline your framework.



5. Build

Begin building the frame over your markings.



6. Smooth

Smooth out the BFS so it sits flat and firm.



7. Secure

Small slits can be cut out of baseplates to enable water runoff.



8. Finish

Complete framework and internal fitout.



9. Remove

Once the addition is watertight the BFS can be cut out and discarded.

Any tarp related questions? Feel free to contact us on:

 1300 656 211 (All Hours)

 info@abctarps.com.au

 www.abctarps.com.au

 [abctarps](https://www.instagram.com/abctarps)